











SYNDAL[®]

TRANCIATURA | SHEARING | SCHNEIDELEMENTE UND ZUBEHÖR

INDICE CONTENTS

T1	102	PUNZONE DIN 9861 ISO 6752 PUNCH DIN 9861 ISO 6752 SCHNEIDSTEMPEL DIN 9861 ISO 6752	03	
	1R/1J	PUNZONE RIBASSATO DIN 9861 ISO 6752 PUNCH DIN 9861 ISO 6752, STEPPED SCHNEIDSTEMPEL DIN 9861 ISO 6752, ABGESETZT	04	
	2RB/2JB	PUNZONE TESTA RINFORZATA REINFORCED HEAD PUNCH SCHNEIDSTEMPEL MIT VERSTÄRKTEM KOPF	06	
	2R/2J	PUNZONE TESTA RINFORZATA RIBASSATO REINFORCED HEAD PUNCH, STEPPED SCHNEIDSTEMPEL MIT VERSTÄRKTEM KOPF ABGESETZT	08	
	4RB/4JB	PUNZONE A COLLO DI TROMBONE PUNCH WITH TAPERED SCHNEIDSTEMPEL MIT POSAUNENHALS	10	
	4R/4J	PUNZONE A COLLO DI TROMBONE RIBASSATO PUNCH WITH TAPERED, STEPPED SCHNEIDSTEMPEL MIT POSAUNENHALS, ABGESETZT	12	
T2	103/113	MATRICE DIN 9845 CON / SENZA TESTA MATRIX DIE DIN 9845 WITH / WITHOUT SHOULDER SCHNEIDBUCHSE DIN 9845 MIT / OHNE BUND	15	
T4	119P/119Z	PUNZONE MARCHIO STAMP BUCHSTABENSTEMPEL	16	
	219/229	PORTATIMBRI / REAZIONE RETAINER / BACKING PLATE HALTEPLATTE / DRUCKPLATTE	17	
T5	102	ESPULSORE DIN 9861 EJECTOR PIN DIN 9861 SCHNEIDSTEMPEL NACH DIN 9861	18	
	202.0A	ESPULSORE TESTA CILINDRICA ISO 1530-1 NITRURATO EJECTOR ISO 1530-1 NITRURED AUSWERFERSTIFT ISO 1530-1 NITRIERT	19	
	202.AH	ESPULSORE TESTA CILINDRICA ISO 1530-1 TEMPERATO EJECTOR ISO 1530-1 THROUGH - HARDNED AUSWERFERSTIFT ISO 1530-1 GEHÄRTET	20	
	206.0A	ESPULSORE TESTA CILINDRICA ISO 1530-1 FIAT EJECTOR ISO 1530-1 FIAT AUSWERFERSTIFT ISO 1530-1 FIAT	21	



T1.1 PUNZONE DIN 9861 ISO 6752

T1.1 PUNCH DIN 9861 ISO 6752

T1.1 SCHNEIDSTEMPEL DIN 9861 ISO 6752

T1.102

Punzone DIN 9861 ISO 6752

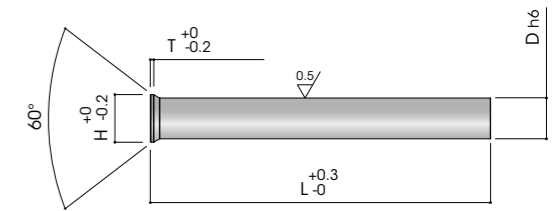
Punch DIN 9861 ISO 6752

Schneidstempel DIN 9861 ISO 6752

Esecuzione: Rettificato e lappato

Execution: Shaft is grinded and lapped

Ausführung: Schaft, geschliffen und geläppt



D	H	T	71	80	100
1,1	1,8	0,5	•	•	•
1,2	2	0,5	•	•	•
1,4	2,2	0,5	•	•	•
2	3	0,5	•	•	•
2,1	3,2	0,5	•	•	•
2,6	4	0,5	•	•	•
3	4,5	0,5	•	•	•
3,5	5	0,5	•	•	•
4	5,5	0,5	•	•	•
4,5	6	0,5	•	•	•
5	6,5	0,5	•	•	•
5,5	7	0,5	•	•	•
6	8	0,5	•	•	•
6,5	9	1	•	•	•

D	H	T	71	80	100
7,5	8,4	10	•	•	•
8,5	9,4	11	•	•	•
9,5	10,4	12	•	•	•
10,5	11,4	13	•	•	•
11,5	12,4	14	•	•	•
12,5	13,4	15	•	•	•
13,5	14,4	16	•	•	•
14,5	15	17	•	•	•
15,10	16	18	•	•	•
16,10	17	19	•	•	•
17,10	18	20	•	•	•
18,10	19	21	•	•	•
19,10	20	22	•	•	•

MATERIALI

Material / Werkstoff

CODE	DESCRIPTION	BODY HARDNESS	HEAD HARDNESS
D2	WS / 1.2210	60-62 HRC	40-45 HRC
A2	HWS / 1.2436	60-63 HRC	40-45 HRC
M2	HSS / 1.3343	62-64 HRC	50-53 HRC
PS	ASP23	63-65 HRC	50-53 HRC

ALTRO MATERIALE A RICHIESTA

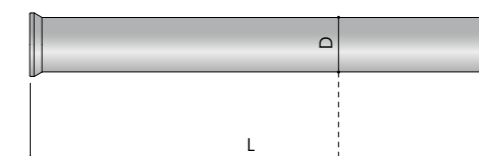
OTHER MATERIAL ON REQUEST / ANDERER WERKSTOFF AUF ANFRAGE

Su richiesta da ø 3 fornibili con espulsore

On request from ø 3 available with ejector / Auf Wunsch ø 3 mit Auswerfer lieferbar

COME ORDINARE

How to order / Bestellbeispiel



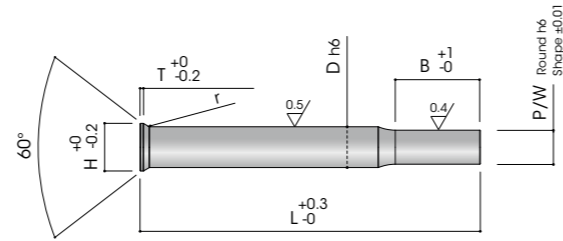
Q.ty	Type	Material	D	L
10	T1.102	M2	16	100

T1.1 PUNZONE RIBASSATO DIN 9861 ISO 6752

T1.1 PUNCH DIN 9861 ISO 6752, STEPPED
T1.1 SCHNEIDSTEMPEL DIN 9861 ISO 6752, ABGESETZT

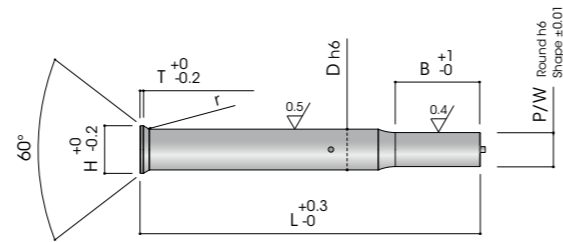
T1.1R

Punzone DIN 9861 ISO 6752
Punch DIN 9861 ISO 6752
Schneidstempel DIN 9861 ISO 6752



T1.1J

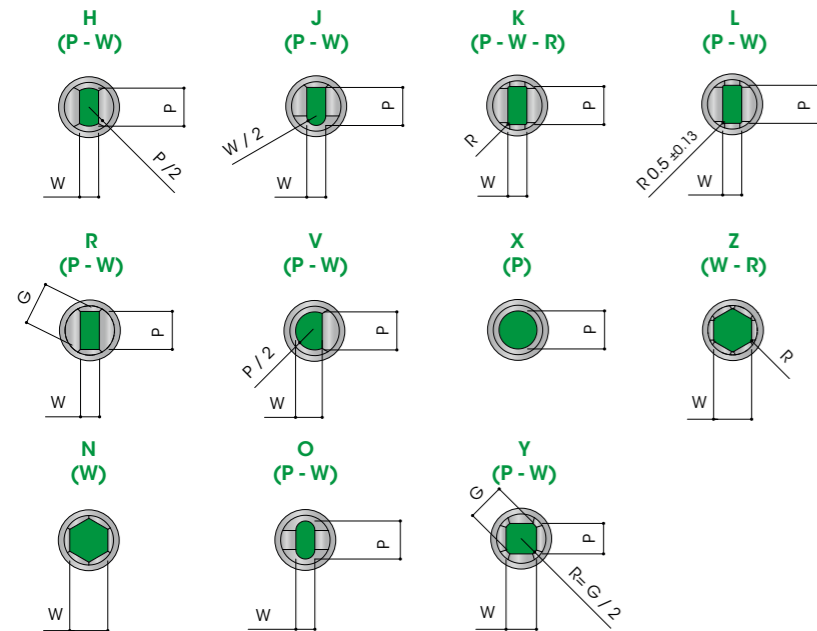
Punzone DIN 9861 ISO 6752 con espulsore
Punch DIN 9861 ISO 6752 with ejector
Schneidstempel DIN 9861 ISO 6752 mit Abdrückstift



T1.1 PUNZONE RIBASSATO DIN 9861 ISO 6752

T1.1 PUNCH DIN 9861 ISO 6752, STEPPED
T1.1 SCHNEIDSTEMPEL DIN 9861 ISO 6752, ABGESETZT

CODE	D	H	T	R	RANGE P	RANGE B	MIN W	MAX P/G	40	50	56	60	63	70	71	80	90	100	120
T1.1R	3	4,5	0,5	0,6	1.00 ÷ 2.99	8 ÷ 19	1.00	2.95	*	*	*	*	*	*	*	*	*	*	*
	4	5,5	0,5	0,6	1.00 ÷ 3.99	8 ÷ 19	1.60	3.95	*	*	*	*	*	*	*	*	*	*	*
	5	6,5	0,5	0,6	1.60 ÷ 4.99	8 ÷ 19	1.60	4.95	*	*	*	*	*	*	*	*	*	*	*
	6	8	0,5	0,6	1.60 ÷ 5.99	13 ÷ 25	1.60	5.95	*	*	*	*	*	*	*	*	*	*	*
	7	9	1	1	2.50 ÷ 6.99	13 ÷ 25	2.50	6.95	*	*	*	*	*	*	*	*	*	*	*
	8	10	1	1	2.50 ÷ 7.99	13 ÷ 25	2.50	7.95	*	*	*	*	*	*	*	*	*	*	*
	9	11	1	1	3.20 ÷ 8.99	13 ÷ 25	3.20	8.95	*	*	*	*	*	*	*	*	*	*	*
	10	12	1	1	3.20 ÷ 9.99	13 ÷ 25	3.20	9.95	*	*	*	*	*	*	*	*	*	*	*
	11	13	1	1	4.00 ÷ 10.99	13 ÷ 25	4.00	10.95	*	*	*	*	*	*	*	*	*	*	*
	12	14	1	1	4.00 ÷ 11.99	13 ÷ 25	4.00	11.95	*	*	*	*	*	*	*	*	*	*	*
T1.1R / T1.1J	13	15	1	1	4.50 ÷ 12.99	13 ÷ 25	4.50	12.95	*	*	*	*	*	*	*	*	*	*	*
	14	16	1,5	1,4	4.50 ÷ 13.99	13 ÷ 25	4.50	13.95	*	*	*	*	*	*	*	*	*	*	*
	15	17	1,5	1,4	8.00 ÷ 14.99	13 ÷ 25	6.00	14.95	*	*	*	*	*	*	*	*	*	*	*
	16	18	1,5	1,4	8.00 ÷ 15.99	13 ÷ 25	6.00	15.95	*	*	*	*	*	*	*	*	*	*	*
	17	19	1,5	1,4	9.00 ÷ 16.99	19 ÷ 30	7.00	16.95	*	*	*	*	*	*	*	*	*	*	*
	18	20	1,5	1,4	9.00 ÷ 17.99	19 ÷ 30	7.00	17.95	*	*	*	*	*	*	*	*	*	*	*
	19	21	1,5	1,4	10.00 ÷ 18.99	19 ÷ 30	8.00	18.95	*	*	*	*	*	*	*	*	*	*	*
	20	22	1,5	1,4	10.00 ÷ 19.99	19 ÷ 30	8.00	19.95	*	*	*	*	*	*	*	*	*	*	*
	25	27	1,5	1,4	12.00 ÷ 24.99	19 ÷ 30	9.00	24.95	*	*	*	*	*	*	*	*	*	*	*
	32	34	1,5	1,4	16.00 ÷ 31.99	19 ÷ 30	10.00	32.95	*	*	*	*	*	*	*	*	*	*	*



MATERIALI

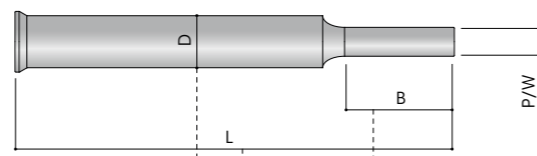
Material / Werkstoff

CODE	DESCRIPTION	BODY HARDNESS	HEAD HARDNESS
A2	HWS / 1.2436	60-63 HRC	40-45 HRC
M2	HSS / 1.3343	62-64 HRC	50-53 HRC
PS	ASP23	63-65 HRC	50-53 HRC

ALTRO MATERIALE A RICHIESTA
OTHER MATERIAL ON REQUEST / ANDERER WERKSTOFF AUF ANFRAGE

COME ORDINARE

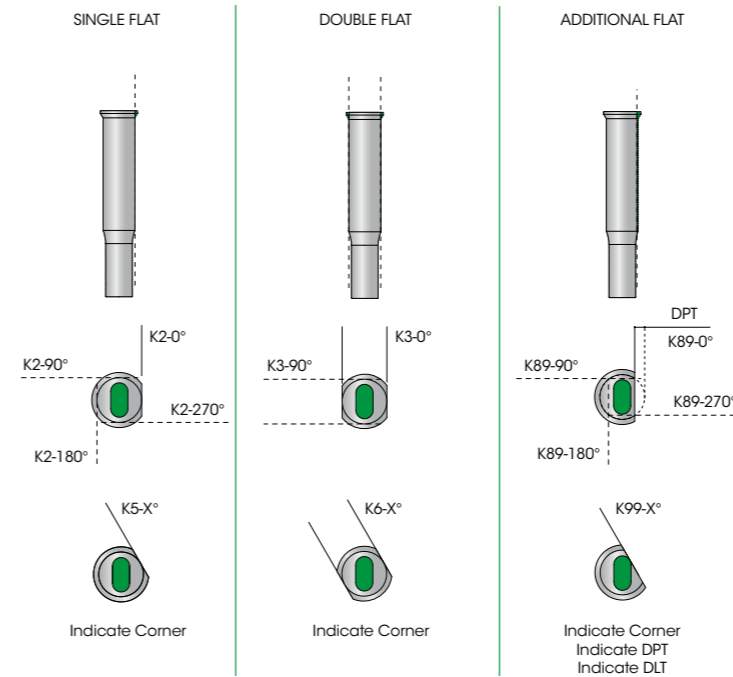
How to order / Bestellbeispiel



Qty	Type	Material	D	L	Dim. Shape	B	Key Flat	Alteration
10	T1.1RX	M2	16	100	P12.5	B22	K2	DL98

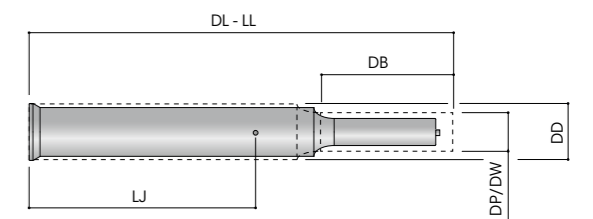
PIANI DI ORIENTAMENTO

Key flat / Verdrehsicherungen



ALTERAZIONI

Alteration / Spezifikation

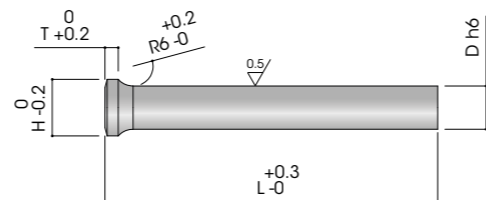


SPECIFICHE ALTERAZIONI A PAGINA 6
ALTERATION 6 PAGE / SPEZIFIKATION AUF SEITE 6

T1.2 PUNZONE TESTA RINFORZATA
T1.2 REINFORCED HEAD PUNCH
T1.2 SCHNEIDSTEMPEL MIT VERSTÄRKTEM KOPF

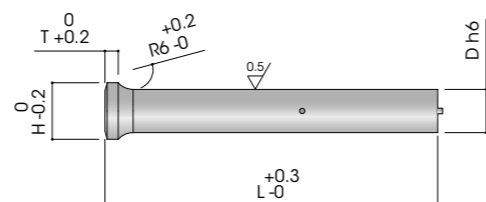
T1.2RB

Punzone testa rinforzata
 Reinforced head punch
 Schneidstempel mit Verstärktem Kopf



T1.2JB

Punzone testa rinforzata con espulsore
 Reinforced head punch with ejector
 Schneidstempel mit Verstärktem Kopf mit Abdrückstift



Esecuzione: Rettificato e lappato
 Execution: Shaft is grinded and lapped
 Ausführung: Schaft, geschliffen und geläppt

MATERIALI

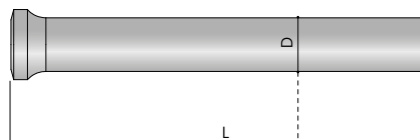
Material / Werkstoff

CODE	DESCRIPTION	BODY HARDNESS	HEAD HARDNESS
A2	HWS / 1.2436	60-63 HRC	40-45 HRC
M2	HSS / 1.3343	62-64 HRC	50-53 HRC
PS	ASP23	63-65 HRC	50-53 HRC

ALTRO MATERIALE A RICHIESTA
 OTHER MATERIAL ON REQUEST / ANDERER WERKSTOFF AUF ANFRAGE

COME ORDINARE

How to order / Bestellbeispiel



Qty 10 Type T1.2RB Material M2 D 16 L 100

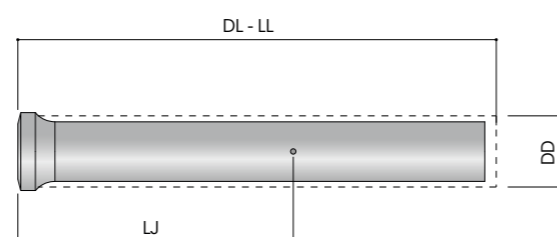
T1.2 PUNZONE TESTA RINFORZATA
T1.2 REINFORCED HEAD PUNCH
T1.2 SCHNEIDSTEMPEL MIT VERSTÄRKTEM KOPF

D	H	T	71	80	100
2	3.2	2	*	*	*
2.1	3.3	2	*	*	*
2.2	3.4	2	*	*	*
2.3	3.5	2	*	*	*
2.4	3.6	2	*	*	*
2.5	3.8	2	*	*	*
2.6	3.9	2	*	*	*
2.7	4	2	*	*	*
2.8	4.1	2	*	*	*
2.9	4.2	2	*	*	*
3	5	2	*	*	*
3.1	5.1	2	*	*	*
3.2	5.2	2	*	*	*
3.3	5.3	2	*	*	*
3.4	5.4	2	*	*	*
3.5	6	2	*	*	*
3.6	6.1	3	*	*	*
3.7	6.2	3	*	*	*
3.8	6.3	3	*	*	*
3.9	6.4	3	*	*	*
4	6.5	3	*	*	*
4.1	6.6	3	*	*	*
4.2	6.7	3	*	*	*
4.3	6.8	3	*	*	*
4.4	6.9	3	*	*	*
4.5	7	3	*	*	*
4.6	7.1	3	*	*	*
4.7	7.2	3	*	*	*
4.8	7.3	3	*	*	*
4.9	7.4	3	*	*	*
5	8	3	*	*	*
5.1	8.1	3	*	*	*
5.2	8.2	3	*	*	*
5.3	8.3	3	*	*	*
5.4	8.4	3	*	*	*
5.5	8.5	3	*	*	*
5.6	8.6	3	*	*	*
5.7	8.7	3	*	*	*
5.8	8.8	3	*	*	*
5.9	8.9	3	*	*	*
6	9	3	*	*	*
6.1	9.1	3	*	*	*

D	H	T	71	80	100
6.2	9.2	3	*	*	*
6.3	9.3	3	*	*	*
6.4	9.4	3	*	*	*
6.5	10	3	*	*	*
6.6 ÷ 7	10	3	*	*	*
7.1	10.1	3	*	*	*
7.2	10.2	3	*	*	*
7.3	10.3	3	*	*	*
7.4	10.4	3	*	*	*
7.5 ÷ 8	11	3	*	*	*
8.1	11.1	3	*	*	*
8.2	11.2	3	*	*	*
8.3	11.3	3	*	*	*
8.4	11.4	3	*	*	*
8.5 ÷ 9	13	3	*	*	*
9.1	13.1	3	*	*	*
9.2	13.2	3	*	*	*
9.3	13.3	3	*	*	*
9.4	13.4	3	*	*	*
9.5 ÷ 10	14	3	*	*	*
10.1	14.1	4	*	*	*
10.2	14.2	4	*	*	*
10.3	14.3	4	*	*	*
10.4	14.4	4	*	*	*
10.5 ÷ 11	15	4	*	*	*
11.1	15.1	4	*	*	*
11.2	15.2	4	*	*	*
11.3	15.3	4	*	*	*
11.4	15.4	4	*	*	*
11.5 ÷ 12	16	4	*	*	*
12.1	16.1	4	*	*	*
12.2	16.2	4	*	*	*
12.3	16.3	4	*	*	*
12.4	16.4	4	*	*	*
12.5 ÷ 13.4	17	4	*	*	*
13.5 ÷ 14.4	18	4	*	*	*
14.5 ÷ 15.4	19	4	*	*	*
15.5 ÷ 16.9	20	4	*	*	*
17 ÷ 17.9	21	4	*	*	*
18 ÷ 18.9	22	4	*	*	*
19 ÷ 19.9	23	4	*	*	*
20	24	4	*	*	*

ALTERAZIONI

Alteration / Spezifikation



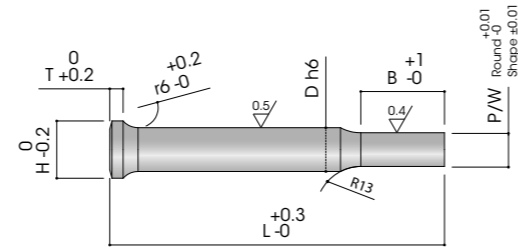
SPECIFICHE ALTERAZIONI A PAGINA 6
 ALTERATION 6 PAGE / SPEZIFIKATION AUF SEITE 6

T1.2 PUNZONE TESTA RINFORZATA RIBASSATO

T1.2 REINFORCED HEAD PUNCH, STEPPED
T1.2 SCHNEIDSTEMPEL MIT VERSTÄRKTEM KOPF ABGESETZT

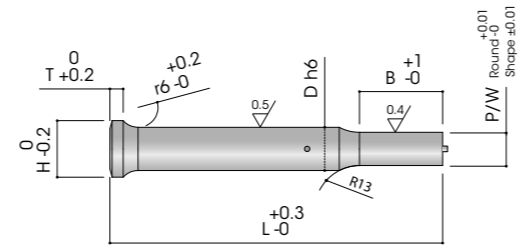
T1.2R

Punzone testa rinforzata
Reinforced head punch
Schneidstempel mit Verstärktem Kopf



T1.2J

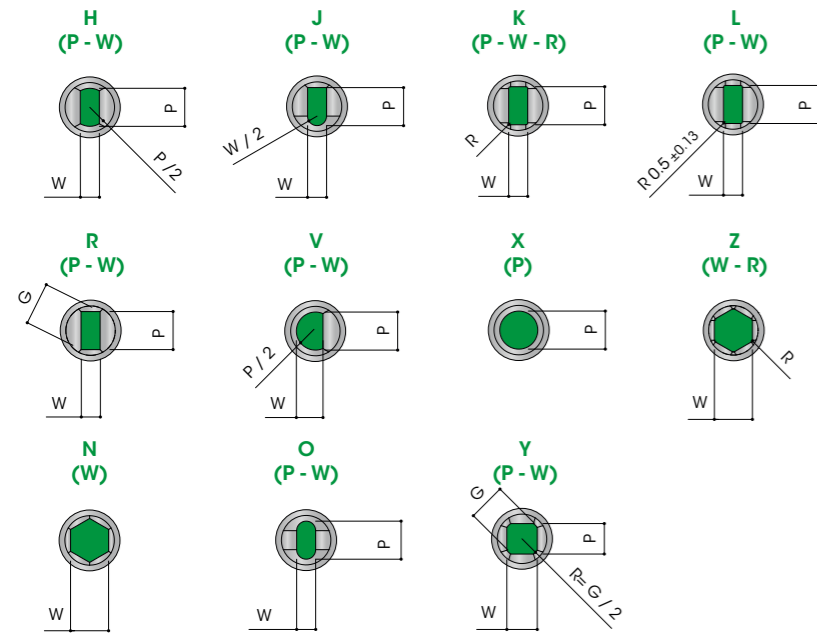
Punzone testa rinforzata con espulsore
Reinforced head punch with ejector
Schneidstempel mit Verstärktem Kopf mit Abdrückstift



T1.2 PUNZONE TESTA RINFORZATA RIBASSATO

T1.2 REINFORCED HEAD PUNCH, STEPPED
T1.2 SCHNEIDSTEMPEL MIT VERSTÄRKTEM KOPF ABGESETZT

CODE	D	H	T	RANGE P	RANGE B	MIN W	MAX P/G	40	50	56	60	63	70	71	80	90	100	120
T1.2R	3	5	2	1.00 ÷ 2.99	8 ÷ 19	1.00	2.95	*	*	*	*	*	*	*	*	*	*	*
	4	6.5	3	1.00 ÷ 3.99	8 ÷ 19	1.60	3.95	*	*	*	*	*	*	*	*	*	*	*
	5	8	3	1.60 ÷ 4.99	8 ÷ 19	1.60	4.95	*	*	*	*	*	*	*	*	*	*	*
	6	9	3	1.60 ÷ 5.99	13 ÷ 25	1.60	5.95	*	*	*	*	*	*	*	*	*	*	*
	7	10	3	2.50 ÷ 6.99	13 ÷ 25	2.50	6.95	*	*	*	*	*	*	*	*	*	*	*
	8	11	3	2.50 ÷ 7.99	13 ÷ 25	2.50	7.95	*	*	*	*	*	*	*	*	*	*	*
	9	13	3	3.20 ÷ 8.99	13 ÷ 25	3.20	8.95	*	*	*	*	*	*	*	*	*	*	*
	10	14	3	3.20 ÷ 9.99	13 ÷ 25	3.20	9.95	*	*	*	*	*	*	*	*	*	*	*
	11	15	4	4.00 ÷ 10.99	13 ÷ 25	4.00	10.95	*	*	*	*	*	*	*	*	*	*	*
	12	16	4	4.00 ÷ 11.99	13 ÷ 25	4.00	11.95	*	*	*	*	*	*	*	*	*	*	*
T1.2R / T1.2J	13	17	4	4.50 ÷ 12.99	13 ÷ 25	4.50	12.95	*	*	*	*	*	*	*	*	*	*	*
	14	18	4	4.50 ÷ 13.99	13 ÷ 25	4.50	13.95	*	*	*	*	*	*	*	*	*	*	*
	15	19	4	8.00 ÷ 14.99	13 ÷ 25	6.00	14.95	*	*	*	*	*	*	*	*	*	*	*
	16	20	4	8.00 ÷ 15.99	13 ÷ 25	6.00	15.95	*	*	*	*	*	*	*	*	*	*	*
	17	21	4	9.00 ÷ 16.99	19 ÷ 30	7.00	16.95	*	*	*	*	*	*	*	*	*	*	*
	18	22	4	9.00 ÷ 17.99	19 ÷ 30	7.00	17.95	*	*	*	*	*	*	*	*	*	*	*
	19	23	4	10.00 ÷ 18.99	19 ÷ 30	8.00	18.95	*	*	*	*	*	*	*	*	*	*	*
	20	24	4	10.00 ÷ 19.99	19 ÷ 30	8.00	19.95	*	*	*	*	*	*	*	*	*	*	*
	25	29	4	12.00 ÷ 24.99	19 ÷ 30	9.00	24.95	*	*	*	*	*	*	*	*	*	*	*
	32	36	4	16.00 ÷ 31.99	19 ÷ 30	10.00	32.95	*	*	*	*	*	*	*	*	*	*	*



MATERIALI

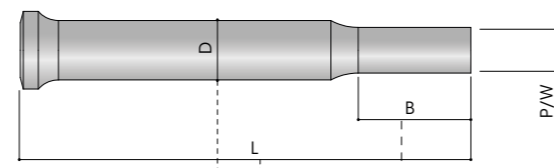
Material / Werkstoff

CODE	DESCRIPTION	BODY HARDNESS	HEAD HARDNESS
M2	HSS / 1.3343	62-64 HRC	50-53 HRC
PS	ASP23	63-65 HRC	50-53 HRC

ALTRO MATERIALE A RICHIESTA
OTHER MATERIAL ON REQUEST / ANDERER WERKSTOFF AUF ANFRAGE

COME ORDINARE

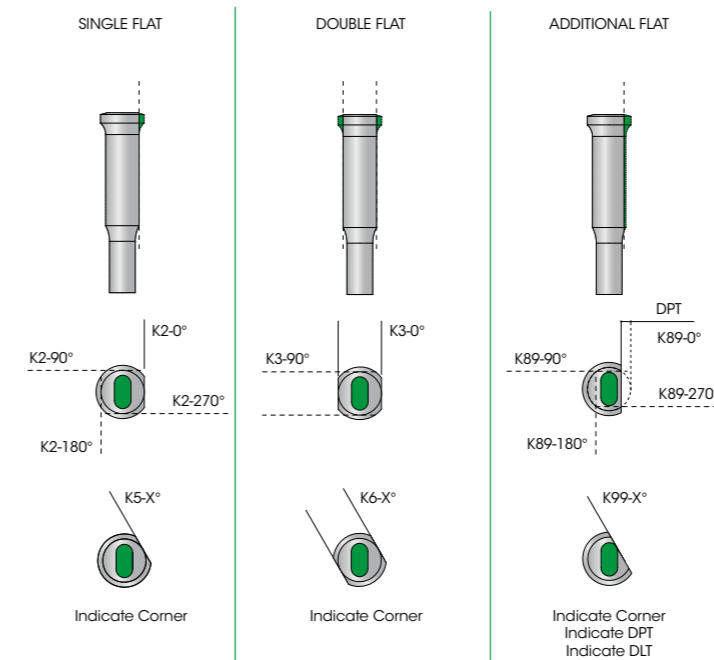
How to order / Bestellbeispiel



Qty	Type	Material	D	L	Dim. Shape	B	Key Flat	Alteration
10	T1.2RX	M2	16	100	P13.2	B22	K2	DL98

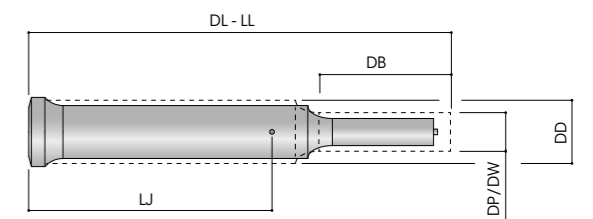
PIANI DI ORIENTAMENTO

Key flat / Verdrehsicherungen



ALTERAZIONI

Alteration / Spezifikation



SPECIFICHE ALTERAZIONI A PAGINA 6
ALTERATION 6 PAGE / SPEZIFIKATION AUF SEITE 6

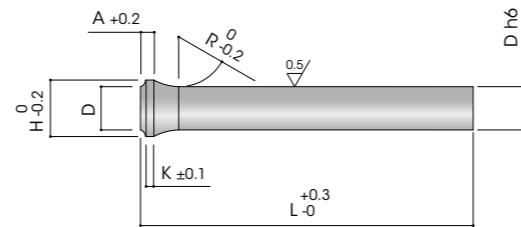
T1.4 PUNZONE A COLLO DI TROMBONE

T1.4 PUNCH WITH TAPERED

T1.4 SCHNEIDSTEMPEL MIT POSAUNENHALS

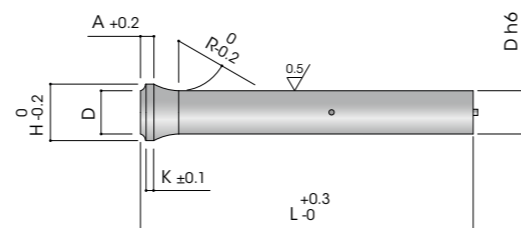
T1.4RB

Punzone a collo di trombone
Punch with tapered
Schneidstempel mit Posaunenhals



T1.4JB

Punzone a collo di trombone con espulsore
Punch with tapered with ejector
Schneidstempel mit Posaunenhals mit Abdrückstift



Esecuzione: Rettificato e lappato
Execution: Shaft is grinded and lapped
Ausführung: Schaft, geschliffen und geläppt

MATERIALI

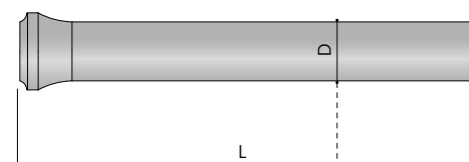
Material / Werkstoff

CODE	DESCRIPTION	BODY HARDNESS	HEAD HARDNESS
M2	HSS / 1.3343	62-64 HRC	50-53 HRC
PS	ASP23	63-65 HRC	50-53 HRC

ALTRO MATERIALE A RICHIESTA
OTHER MATERIAL ON REQUEST / ANDERER WERKSTOFF AUF ANFRAGE

COME ORDINARE

How to order / Bestellbeispiel



Qty	Type	Material	D	L
10	T1.4RB	M2	16	100

T1.4 PUNZONE A COLLO DI TROMBONE

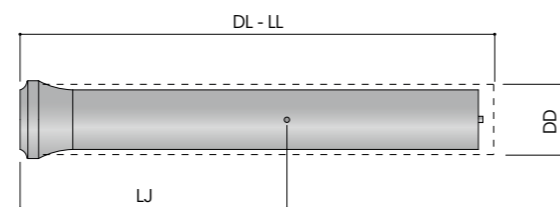
T1.4 PUNCH WITH TAPERED

T1.4 SCHNEIDSTEMPEL MIT POSAUNENHALS

D	H	K	A	R	63	71	80	100	120
2	3	1	3	3.5	•	•	•	•	
2.1 ÷ 2.2	3.2	1	3	5	•	•	•	•	
2.3 ÷ 2.5	3.5	1	3	5	•	•	•	•	
2.6 ÷ 2.9	4	1	3	6.5	•	•	•	•	
3 ÷ 3.4	4.5	1	3	6.5	•	•	•	•	•
3.5 ÷ 3.9	5	1	3	8	•	•	•	•	•
4 ÷ 4.4	5.5	1.5	4	8	•	•	•	•	•
4.5 ÷ 4.9	6	1.5	4	8	•	•	•	•	•
5 ÷ 5.4	7	1.5	4	10	•	•	•	•	•
5.5 ÷ 5.9	8	1.5	4	10	•	•	•	•	•
6 ÷ 6.4	9	1.5	4	10	•	•	•	•	•
6.5 ÷ 7.4	10	1.5	4	12	•	•	•	•	•
7.5 ÷ 8.4	11	1.5	4	12	•	•	•	•	•
8.5 ÷ 9.4	13	1.5	4	15	•	•	•	•	•
9.5 ÷ 10.4	14	1.5	4	15	•	•	•	•	•
10.5 ÷ 11.4	15	1.5	4	15	•	•	•	•	•
11.5 ÷ 12.4	16	1.5	4	15	•	•	•	•	•
12.5 ÷ 13.4	17	1.5	4	15	•	•	•	•	•
13.5 ÷ 14.4	18	1.5	4	15	•	•	•	•	•
14.5 ÷ 15.4	19	1.5	4	15	•	•	•	•	•
15.5 ÷ 16.4	20	1.5	4	15	•	•	•	•	•
16.5 ÷ 17.4	21	1.5	4	15	•	•	•	•	•
17.5 ÷ 18.4	22	1.5	4	15	•	•	•	•	•
18.5 ÷ 19.4	23	1.5	4	15	•	•	•	•	•
19.5 ÷ 20	25	1.5	4	15	•	•	•	•	•
20.1 ÷ 20.9	26	1.5	4	15	•	•	•	•	•
21 ÷ 21.9	27	1.5	4	15	•	•	•	•	•
22 ÷ 22.9	28	1.5	4	15	•	•	•	•	•
23 ÷ 23.9	29	1.5	4	15	•	•	•	•	•
24 ÷ 24.9	30	1.5	4	15	•	•	•	•	•
25	31	1.5	4	15	•	•	•	•	•

ALTERAZIONI

Alteration / Spezifikation



SPECIFICHE ALTERAZIONI A PAGINA 6
ALTERATION 6 PAGE / SPEZIFIKATION AUF SEITE 6

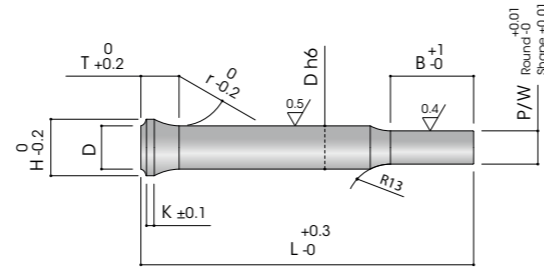
T1.4 PUNZONE A COLLO DI TROMBONE RIBASSATO

T1.4 PUNCH WITH TAPERED, STEPPED

T1.4 SCHNEIDSTEMPEL MIT POSAUNENHALS, ABGESETZT

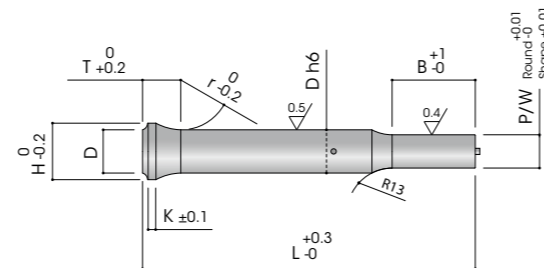
T1.4R

Punzone a collo di trombone
Punch with tapered
Schneidstempel mit Posaunenhals



T1.4J

Punzone a collo di trombone con espulsore
Punch with tapered with ejector
Schneidstempel mit Posaunenhals mit Abdrückstift

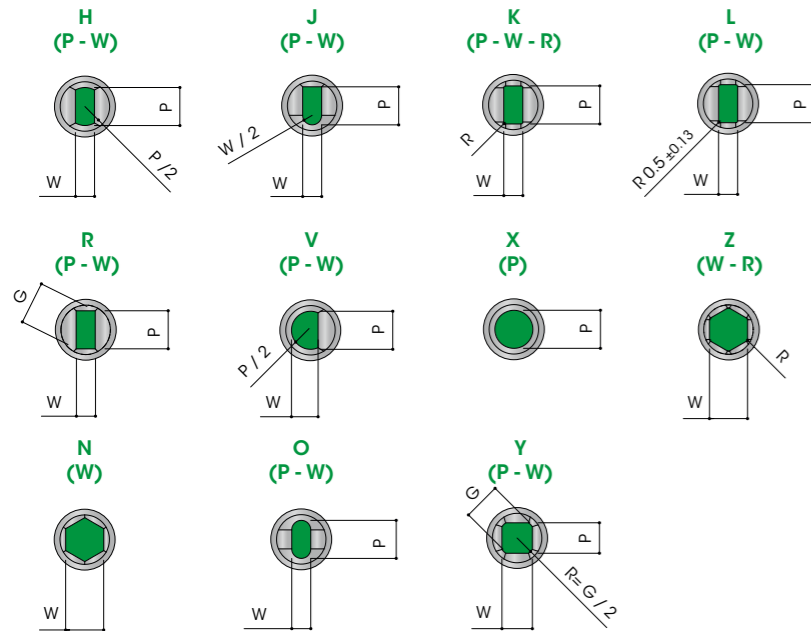


T1.4 PUNZONE A COLLO DI TROMBONE RIBASSATO

T1.4 PUNCH WITH TAPERED, STEPPED

T1.4 SCHNEIDSTEMPEL MIT POSAUNENHALS, ABGESETZT

CODE	D	H	K	A	R	RANGE P	RANGE B	MIN W	MAX P/G	40	50	56	60	63	70	71	80	90	100	120
T1.4R	3	4.5	1	3	6.5	1.00 ÷ 2.99	8 ÷ 19	1.00	2.95	*	*	*	*	*	*	*	*	*	*	*
	4	5.5	1.5	4	8	1.00 ÷ 3.99	8 ÷ 19	1.60	3.95	*	*	*	*	*	*	*	*	*	*	*
	5	7	1.5	4	10	1.60 ÷ 4.99	8 ÷ 19	1.60	4.95	*	*	*	*	*	*	*	*	*	*	*
	6	9	1.5	4	10	1.60 ÷ 5.99	13 ÷ 25	1.60	5.95	*	*	*	*	*	*	*	*	*	*	*
	7	10	1.5	4	12	2.50 ÷ 6.99	13 ÷ 25	2.50	6.95	*	*	*	*	*	*	*	*	*	*	*
	8	11	1.5	4	12	2.50 ÷ 7.99	13 ÷ 25	2.50	7.95	*	*	*	*	*	*	*	*	*	*	*
	9	13	1.5	4	15	3.20 ÷ 8.99	13 ÷ 25	3.20	8.95	*	*	*	*	*	*	*	*	*	*	*
	10	14	1.5	4	15	3.20 ÷ 9.99	13 ÷ 25	3.20	9.95	*	*	*	*	*	*	*	*	*	*	*
	11	15	1.5	4	15	4.00 ÷ 10.99	13 ÷ 25	4.00	10.95	*	*	*	*	*	*	*	*	*	*	*
	12	16	1.5	4	15	4.00 ÷ 11.99	13 ÷ 25	4.00	11.95	*	*	*	*	*	*	*	*	*	*	*
T1.4R/T1.4J	13	17	1.5	4	15	4.50 ÷ 12.99	13 ÷ 25	4.50	12.95	*	*	*	*	*	*	*	*	*	*	*
	14	18	1.5	4	15	4.50 ÷ 13.99	13 ÷ 25	4.50	13.95	*	*	*	*	*	*	*	*	*	*	*
	15	19	1.5	4	15	8.00 ÷ 14.99	13 ÷ 25	6.00	14.95	*	*	*	*	*	*	*	*	*	*	*
	16	20	1.5	4	15	8.00 ÷ 15.99	13 ÷ 25	6.00	15.95	*	*	*	*	*	*	*	*	*	*	*
	17	21	1.5	4	15	9.00 ÷ 16.99	19 ÷ 30	7.00	16.95	*	*	*	*	*	*	*	*	*	*	*
	18	22	1.5	4	15	9.00 ÷ 17.99	19 ÷ 30	7.00	17.95	*	*	*	*	*	*	*	*	*	*	*
	19	23	1.5	4	15	10.00 ÷ 18.99	19 ÷ 30	8.00	18.95	*	*	*	*	*	*	*	*	*	*	*
	20	25	1.5	4	15	10.00 ÷ 19.99	19 ÷ 30	8.00	19.95	*	*	*	*	*	*	*	*	*	*	*
	25	31	1.5	4	15	12.00 ÷ 24.99	19 ÷ 30	9.00	24.95	*	*	*	*	*	*	*	*	*	*	*



MATERIALI

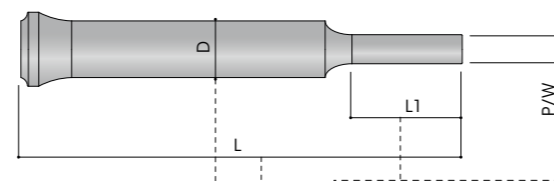
Material / Werkstoff

CODE	DESCRIPTION	BODY HARDNESS	HEAD HARDNESS
M2	HSS / 1.3343	62-64 HRC	50-53 HRC
PS	ASP23	63-65 HRC	50-53 HRC

ALTRO MATERIALE A RICHIESTA
OTHER MATERIAL ON REQUEST / ANDERER WERKSTOFF AUF ANFRAGE

COME ORDINARE

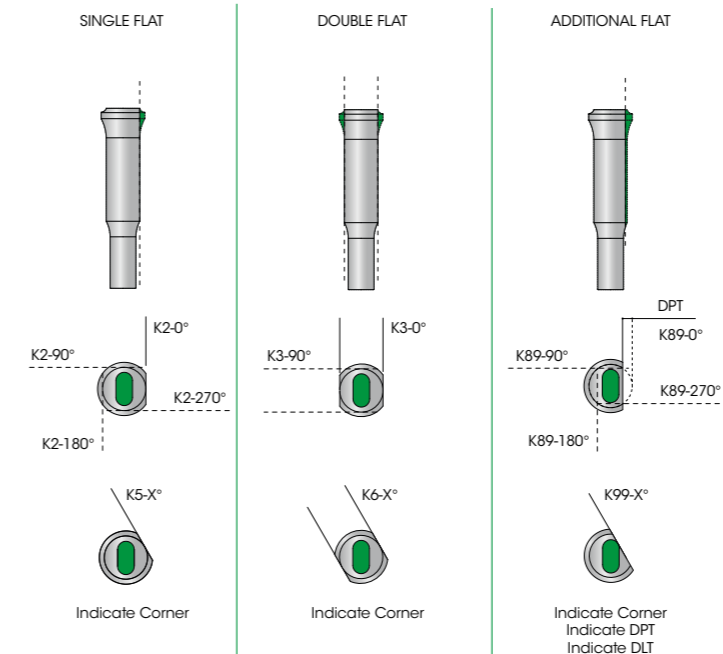
How to order / Bestellbeispiel



Qty	Type	Material	D	L	Dim. Shape	B	Key Flat	Alteration
10	T1.4RX	M2	16	100	P12.5	B22	K2	DL98

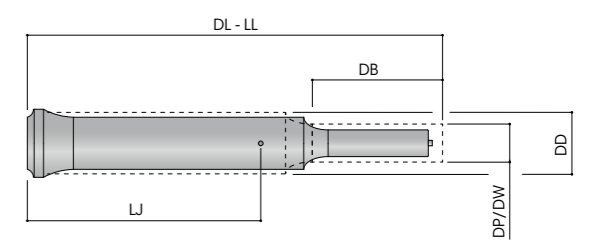
PIANI DI ORIENTAMENTO

Key flat / Verdrehsicherungen



ALTERAZIONI

Alteration / Spezifikation



SPECIFICHE ALTERAZIONI A PAGINA 6
ALTERATION 6 PAGE / SPEZIFIKATION AUF SEITE 6

T2.1 MATRICE DIN 9845 CON / SENZA TESTA

T2.1 MATRIX DIE DIN 9845 WITH / WITHOUT SHOULDER

T2.1 SCHNEIDBUCHSE DIN 9845 MIT / OHNE BUND

T2.103

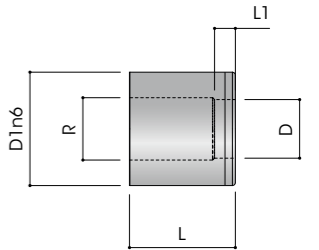
Matrice DIN 9845 tipo "A" liscia
 Matrix die DIN 9845 type "A" without head
 Schneidbuchse DIN 9845 art "A" Bund

Material: A2(HWS) / M2(HSS)
 Hardness: A2 60±2 HRC
 M2 64±2 HRC

Execution: Hardening, tempered

Esempio di ordine / Example of order / Bestellbeispiel:

T2.103 [MATERIAL].[D][L]E[D1] T2.103A2.060028E12



D	D1	L	L1	R
2	6	20	28	3
2 ÷ 3,3	7	20	28	3
3,1 ÷ 4	8	20	28	4
4,1 ÷ 5	10	20	28	4
5,1 ÷ 6	12	20	28	4
6,1 ÷ 8	15	20	28	4
8,1 ÷ 10	18	20	28	4

D	D1	L	L1	R
10,1 ÷ 12	22	20	28	5
12,1 ÷ 15	26	20	28	5
* 15,5 ÷ 18	30	20	28	5
* 18,5 ÷ 22	35	20	28	5
* 22,5 ÷ 26	42	20	28	5
* 26,5 ÷ 30	48	20	28	5

* INCREMENTO 0.5 MM. / INCREASE OF 0.5 MM. / ZUNAHME VON 0.5 MM.

T2.113

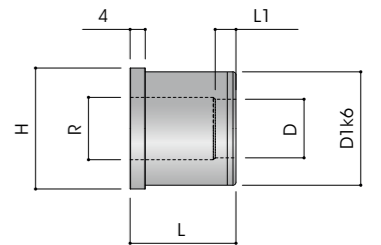
Matrice DIN 9845 tipo "B" con testa
 Matrix die DIN 9845 type "B" with head
 Schneidbuchse DIN 9845 art "B" mit kopf

Material: A2(HWS) / M2(HSS)
 Hardness: A2 60±2 HRC
 M2 64±2 HRC

Execution: Hardening, tempered

Esempio di ordine / Example of order / Bestellbeispiel:

T2.113 [MATERIAL].[D][L]E[D1] T2.113A2.060028E12



D	D1	H	L	L1	R
2	6	8	20	28	3
2 ÷ 3,3	7	9	20	28	3
3,1 ÷ 4	8	10	20	28	4
4,1 ÷ 5	10	12	20	28	4
5,1 ÷ 6	12	14	20	28	4
6,1 ÷ 8	15	17	20	28	4
8,1 ÷ 10	18	20	20	28	4

D	D1	H	L	L1	R
10,1 ÷ 12	22	24	20	28	5
12,1 ÷ 15	26	28	20	28	5
* 15,5 ÷ 18	30	32	20	28	5
* 18,5 ÷ 22	35	37	20	28	5
* 22,5 ÷ 26	42	44	20	28	5
* 26,5 ÷ 30	48	50	20	28	5

* INCREMENTO 0.5 MM. / INCREASE OF 0.5 MM. / ZUNAHME VON 0.5 MM.

T4 PUNZONE MARCHIO

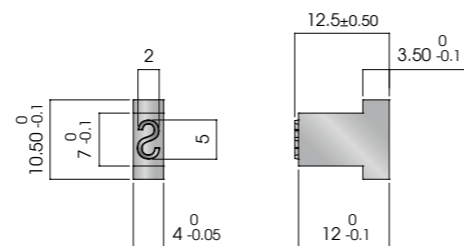
T4 STAMP
T4 BUCHSTABENSTEMPEL

T4.119.P

Punzone marchio
Stamp
Buchstabenstempel

Material: X153CrMoV12

Esempio di ordine / Example of order / Bestellbeispiel:
T4.119.P785 [CODE] T4.119.P78515002



CODE	STAMP
T4119.P785150002	0
T4119.P785150102	1
T4119.P785150202	2
T4119.P785150302	3
T4119.P785150402	4
T4119.P785150502	5
T4119.P785150602	6 9
T4119.P785150702	7
T4119.P785150802	8
T4119.P785289002	SPACE

CODE	STAMP
T4119.P785151302	A
T4119.P785151402	B
T4119.P785151502	C
T4119.P785151602	D
T4119.P785151702	E
T4119.P785151802	F
T4119.P785151902	G
T4119.P785152002	H
T4119.P785172104	I
T4119.P785152202	J

CODE	STAMP
T4119.P785152302	K
T4119.P785152402	L
T4119.P785152502	M
T4119.P785152602	N
T4119.P785152702	O
T4119.P785152802	P
T4119.P785152902	Q
T4119.P785153002	R
T4119.P785153102	S
T4119.P785153202	T

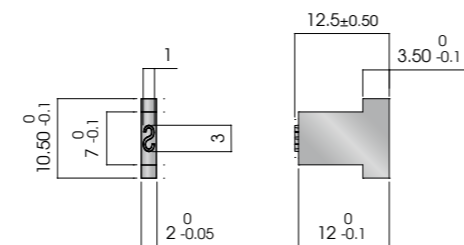
CODE	STAMP
T4119.P785153302	U
T4119.P785153402	V
T4119.P785153502	W
T4119.P785153602	X
T4119.P785153702	Y
T4119.P785153802	Z
T4119.Z000504318	—
T4119.N000464606	—

T4.119.Z

Punzone marchio
Stamp
Buchstabenstempel

Material: X153CrMoV12

Esempio di ordine / Example of order / Bestellbeispiel:
T4.119.Z000 [CODE] T4.119.Z000491667



CODE	STAMP
T4119.Z000491893	0 / O
T4119.Z000491957	1
T4119.Z000491958	2
T4119.Z000491959	3
T4119.Z000491960	4
T4119.Z000491961	5
T4119.Z000491962	6 9
T4119.Z000491963	7
T4119.Z000491964	8
T4119.Z000492408	SPACE

CODE	STAMP
T4119.Z000491965	A
T4119.Z000491966	B
T4119.Z000491967	C
T4119.Z000491968	D
T4119.Z000491969	E
T4119.Z000491970	F
T4119.Z000491971	G
T4119.Z000491972	H
T4119.Z000491973	I

CODE	STAMP
T4119.Z000491974	J
T4119.Z000491975	K
T4119.Z000491976	L
T4119.Z000491977	M
T4119.Z000491978	N
T4119.Z000491979	P
T4119.Z000491980	Q
T4119.Z000492022	R
T4119.Z000492023	S

CODE	STAMP
T4119.Z000492024	T
T4119.Z000492025	U
T4119.Z000492026	V
T4119.Z000492027	W
T4119.Z000492028	X
T4119.Z000492029	Y
T4119.Z000492030	Z
T4119.Z000504318	—
T4119.N000467865	—

T4 PORTATIMBRI / REAZIONE

T4 RETAINER / BACKING PLATE
T4 HALTEPLATTE / DRUCKPLATTE

T4.219

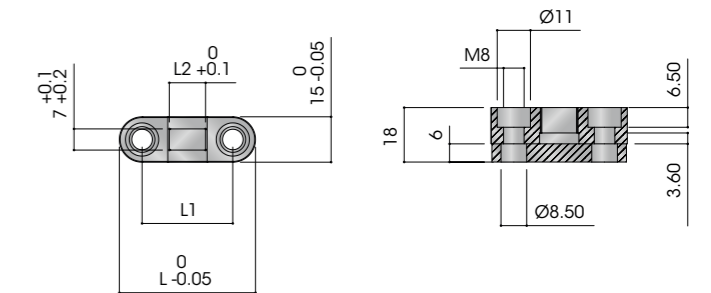
Portatimbri
Stamp retainer
Halteplatte

Material: CK45

Esempio di ordine / Example of order / Bestellbeispiel:
T4.219[N.°STAMP][L]1518 T4.219.03.451518



CODE	STAMP	L	L1	L2
T421903.451518	3	45	30	12
T421904.471518	4	47	32	16
T421906.551518	6	55	40	24



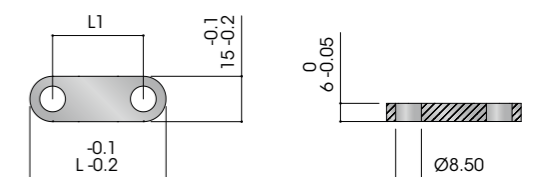
CODE	N° STAMP	L	L1	L2
T421908.631518	8	63	48	32
T421910.711518	10	71	56	40

T4.229

Piastra di reazione
Backing plate
Druckplatte

Material: CK45

Esempio di ordine / Example of order / Bestellbeispiel:
T4.229



CODE	L	L1
T422945.451512	45	30
T422945.471512	47	32
T422945.551512	55	40

CODE	L	L1
T422945.631512	63	48
T422945.711512	71	56

T5.1 ESPULSORE DIN 9861

T5.1 EJECTOR PIN DIN 9861

T5.1 SCHNEIDSTEMPEL NACH DIN 9861

T5.102.0D

Espulsore DIN 9861-D DIN 1530-3
Ejector PIN DIN 9861-D DIN1530-3
Schneidstempel nach DIN 9861-D DIN 1530-3

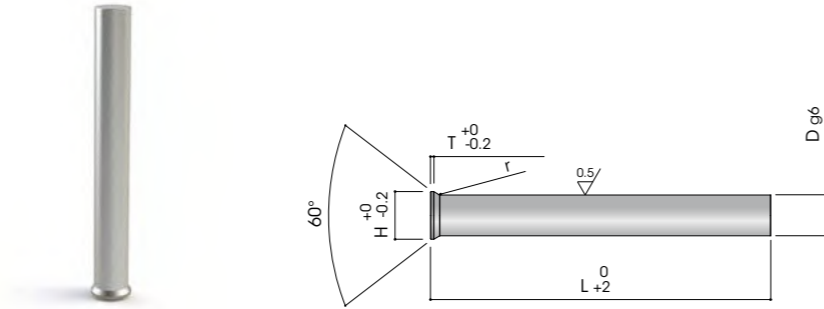
Material: D2(1.2210)(WS)
Hardness SHANK: 60±2 HRC
Hardness HEAD: 45±5 HRC
Tolerance: g6
Execution: ground and lapped, the head is hot formed and tempered

Esempio di ordine / Example of order / Bestellbeispiel:

T5.102.0D.[D][L] T5.102.0D.1250160

D	H	T	125	160	200	250	315
1 ÷ 1,1	1,8	0,5	*	*	*	*	*
1,2 ÷ 1,3	2	0,5	*	*	*	*	*
1,4 ÷ 1,5	2,2	0,5	*	*	*	*	*
1,6 ÷ 1,7	2,5	0,5	*	*	*	*	*
1,8 - 1,9	2,8	0,5	*	*	*	*	*
2	3	0,5	*	*	*	*	*
2,1 ÷ 2,2	3,2	0,5	*	*	*	*	*
2,3 ÷ 2,5	3,5	0,5	*	*	*	*	*
2,6 ÷ 2,9	4	0,5	*	*	*	*	*
3 ÷ 3,4	4,5	0,5	*	*	*	*	*
3,5 ÷ 3,9	5	0,5	*	*	*	*	*
4 ÷ 4,4	5,5	0,5	*	*	*	*	*
4,5 ÷ 4,9	6	0,5	*	*	*	*	*
5 ÷ 5,4	6,5	0,5	*	*	*	*	*
5,5 ÷ 5,9	7	0,5	*	*	*	*	*
6 ÷ 6,4	8	0,5	*	*	*	*	*

D	H	T	125	160	200	250	315
6,5 ÷ 7,4	9	1	*	*	*	*	*
7,5 ÷ 8,4	10	1	*	*	*	*	*
8,5 ÷ 9,4	11	1	*	*	*	*	*
9,5 ÷ 10,4	12	1	*	*	*	*	*
10,5 ÷ 11,4	13	1	*	*	*	*	*
11,5 ÷ 12,4	14	1	*	*	*	*	*
12,5 ÷ 13,4	15	1	*	*	*	*	*
13,5 ÷ 14,4	16	1	*	*	*	*	*
14,5 ÷ 15	17	1,5	*	*	*	*	*
15,1 ÷ 16	18	1,5	*	*	*	*	*
16,1 ÷ 17	19	1,5	*	*	*	*	*
17,1 ÷ 18	20	1,5	*	*	*	*	*
18,1 ÷ 19	21	1,5	*	*	*	*	*
18,2 ÷ 19	21	1,5	*	*	*	*	*
19,1 ÷ 20	22	1,5	*	*	*	*	*



T5.2 ESPULSORE TESTA CILINDRICA ISO 1530-1 NITRURATO

T5.2 EJECTOR ISO 1530-1 NITRURED

T5.2 AUSWERFERSTIFT ISO 1530-1 NITRIERT

T5.202.0A

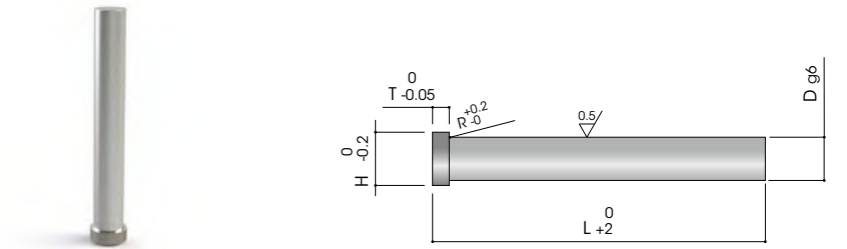
Espulsore testa cilindrica nitrurato ISO 6751-A DIN 1530-1
Nitrided ejector pin ISO 6751-A DIN1530-1
Auswerferstift nitriert ISO 6751-A DIN1530-1

Material: 1.2344
Hardness SURFACE: >1000 Vickers
Hardness HEAD: 45±5 HRC
Tolerance: g6
Tensile strenght: 1400 N/mm2

Esempio di ordine / Example of order / Bestellbeispiel:

T5.202.0A.[D][L] T5.202.0A.0800125

D	H	T	100	125	160	200	250	315	400	500	630	800	1000	1200
1	2,5	1,2	*	*	*									
1,5	3	1,5	*	*	*	*								
2	4	2	*	*	*	*	*	*	*					
2,2	4	2	*	*	*	*	*	*	*					
2,5	5	2	*	*	*	*	*	*	*	*				
2,7	5	2	*	*	*	*	*	*	*					
3	6	3	*	*	*	*	*	*	*	*	*			
3,2	6	3	*	*	*	*	*	*	*	*	*			
3,5	7	3	*	*	*	*	*	*	*	*	*	*		
3,7	7	3	*	*	*	*	*	*	*	*	*	*		
4	8	3	*	*	*	*	*	*	*	*	*	*	*	*
4,2	8	3	*	*	*	*	*	*	*	*	*	*	*	*
4,5	8	3	*	*	*	*	*	*	*	*	*	*	*	*
5	10	3	*	*	*	*	*	*	*	*	*	*	*	*
5,2	10	3	*	*	*	*	*	*	*	*	*	*	*	*
5,5	10	3	*	*	*	*	*	*	*	*	*	*	*	*
6	12	5	*	*	*	*	*	*	*	*	*	*	*	*
6,2	12	5	*	*	*	*	*	*	*	*	*	*	*	*
6,5	12	5	*	*	*	*	*	*	*	*	*	*	*	*
7	12	5	*	*	*	*	*	*	*	*	*	*	*	*
7,5	12	5	*	*	*	*	*	*	*	*	*	*	*	*
8	14	5	*	*	*	*	*	*	*	*	*	*	*	*
8,2	14	5	*	*	*	*	*	*	*	*	*	*	*	*
8,5	14	5	*	*	*	*	*	*	*	*	*	*	*	*
9	14	5	*	*	*	*	*	*	*	*	*	*	*	*
9,5	14	5	*	*	*	*	*	*	*	*	*	*	*	*
10	16	5	*	*	*	*	*	*	*	*	*	*	*	*
10,2	16	5	*	*	*	*	*	*	*	*	*	*	*	*
10,5	16	5	*	*	*	*	*	*	*	*	*	*	*	*
11	16	5	*	*	*	*	*	*	*	*	*	*	*	*
12	18	7	*	*	*	*	*	*	*	*	*	*	*	*
12,2	18	7	*	*	*	*	*	*	*	*	*	*	*	*
12,5	18	7	*	*	*	*	*	*	*	*	*	*	*	*
14	22	7	*	*	*	*	*	*	*	*	*	*	*	*
15,5	22	7	*	*	*	*	*	*	*	*	*	*	*	*
16	22	7	*	*	*	*	*	*	*	*	*	*	*	*
18	24	7	*	*	*	*	*	*	*	*	*	*	*	*
20	26	8	*	*	*	*	*	*	*	*	*	*	*	*
25	32	10	*	*	*	*	*	*	*	*	*	*	*	*
32	40	10	*	*	*	*	*	*	*	*	*	*	*	*



T5.2 ESPULSORE TESTA CILINDRICA ISO 1530-1 TEMPERATO

T5.2 EJECTOR ISO 1530-1 THROUGH - HARDNED

T5.2 AUSWERFERSTIFT ISO 1530-1 GEHÄRTET

T5.202.AH

Espulsore temperato ISO 6751-AH DIN 1530-1
 Hardened ejector pin ISO 6751-AH DIN 1530-1
 Auswerferstift Gehärtet ISO 6751-AH DIN 1530-1

Material: 1.2510
 Hardness SURFACE: 58-62 HRC/1100 Vickers
 Hardness HEAD: 45±5 HRC
 Tolerance: g6

Esempio di ordine / Example of order / Bestellbeispiel:
 T5.202.AH. [D][L] T5.202.AH.1200160

D	H	T	100	125	160	200	250	315	400	500
1	2,5	1,2	•	•	•					
1,1	2,5	1,2	•	•	•					
1,2	2,5	1,2	•	•	•					
1,3	3	1,5	•	•	•					
1,4	3	1,5	•	•	•					
1,5	3	1,5	•	•	•	•				
1,6	3	1,5	•	•	•					
1,7	3	1,5	•	•	•	•				
1,8	3	1,5	•	•	•					
1,9	3	1,5	•	•	•					
2	4	2	•	•	•	•	•			
2,2	4	2	•	•	•	•	•			
2,5	5	2	•	•	•	•	•			
2,7	5	2	•	•	•	•	•			
3	6	3	•	•	•	•	•	•		
3,2	6	3	•	•	•	•	•	•		
3,5	7	3	•	•	•	•	•	•		
3,7	7	3	•	•	•	•	•	•		
4	8	3	•	•	•	•	•	•		
4,2	8	3	•	•	•	•	•	•		
4,5	8	3	•	•	•	•	•	•		
5	10	3	•	•	•	•	•	•		
5,2	10	3	•	•	•	•	•	•		

D	H	T	100	125	160	200	250	315	400	500
5,5	10	3	•	•	•	•	•	•	•	
6	12	5	•	•	•	•	•	•	•	•
6,2	12	5	•	•	•	•	•	•	•	
6,5	12	5	•	•	•	•	•	•	•	
7	12	5	•	•	•	•	•	•	•	
7,5	12	5	•	•	•	•	•	•	•	
8	14	5	•	•	•	•	•	•	•	•
8,2	14	5	•	•	•	•	•	•	•	
8,5	14	5	•	•	•	•	•	•	•	
9	14	5	•	•	•	•	•	•	•	
9,5	14	5	•	•	•	•	•	•	•	
10	16	5	•	•	•	•	•	•	•	•
10,2	16	5	•	•	•	•	•	•	•	
10,5	16	5	•	•	•	•	•	•	•	
11	16	5	•	•	•	•	•	•	•	
12	18	7	•	•	•	•	•	•	•	•
12,2	18	7	•	•	•	•	•	•	•	
12,5	18	7	•	•	•	•	•	•	•	
14	22	7	•	•	•	•	•	•	•	
16	22	7	•	•	•	•	•	•	•	•
18	24	7	•	•	•	•	•	•	•	
20	26	8	•	•	•	•	•	•	•	•

T5.2 ESPULSORE TESTA CILINDRICA ISO 1530-1 FIAT

T5.2 EJECTOR 1530-1 FIAT

T5.2 AUSWERFERSTIFT 1530-1 FIAT

T5.206.0A

Espulsore testa cilindrica nitratato FIAT DIN 1530-1
 Nitrided ejector PIN FIAT DIN1530-1
 Auswerferstift nitriert FIAT DIN1530-1

Material: 1.2344
 Hardness SURFACE: >1000 Vickers
 Hardness HEAD: 45±5 HRC
 Tolerance: g6
 Tensile strenght: 1400 N/mm²

Esempio di ordine / Example of order / Bestellbeispiel:
 T5.206.0A [D][L] T5.206.0A.0800125

D	H	T	100	125	160	200	250	315	400	500	630	800	1000
3,5	6	3	•	•	•	•	•	•	•				
4	8	4	•	•	•	•	•	•	•				
4,2	8	4	•	•	•	•	•	•	•				
4,5	8	4	•	•	•	•	•	•	•				
5	10	5	•	•	•	•	•	•	•	•			
5,2	10	5	•	•	•	•	•	•	•	•			
5,5	10	5	•	•	•	•	•	•	•	•			
8	14	6,5	•	•	•	•	•	•	•	•			
8,2	14	6,5	•	•	•	•	•	•	•	•	•		
8,5	14	6,5	•	•	•	•	•	•	•	•			
9	14	6,5	•	•	•	•	•	•	•	•			
10	16	6,5	•	•	•	•	•	•	•	•			
10,2	16	6,5	•	•	•	•	•	•	•	•	•		
10,5	16	6,5	•	•	•	•	•	•	•	•			
11	18	6,5	•	•	•	•	•	•	•	•			
12	18	6,5	•	•	•	•	•	•	•	•			
16	24	7	•	•	•	•	•	•	•	•			
18	26	7	•	•	•	•	•	•	•	•			
20	28	7	•	•	•	•	•	•	•	•			



NOTES

Lined writing area for page 22



NOTES

Lined writing area for page 23



SYNDAL srl

Via Cesare Battisti 2
20090 Trezzano sul Naviglio
Milano / Italy

T +39 02 4842051

info@syndal.it
syndal.it



SYNDAL srl

Via Cesare Battisti 2
20090 Trezzano sul Naviglio
Milano / Italy

T +39 02 4842051

info@syndal.it
syndal.it